

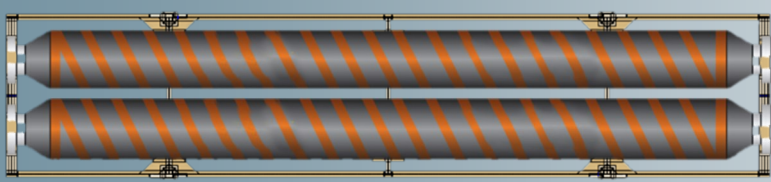
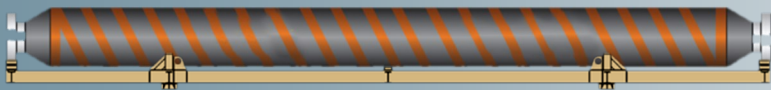
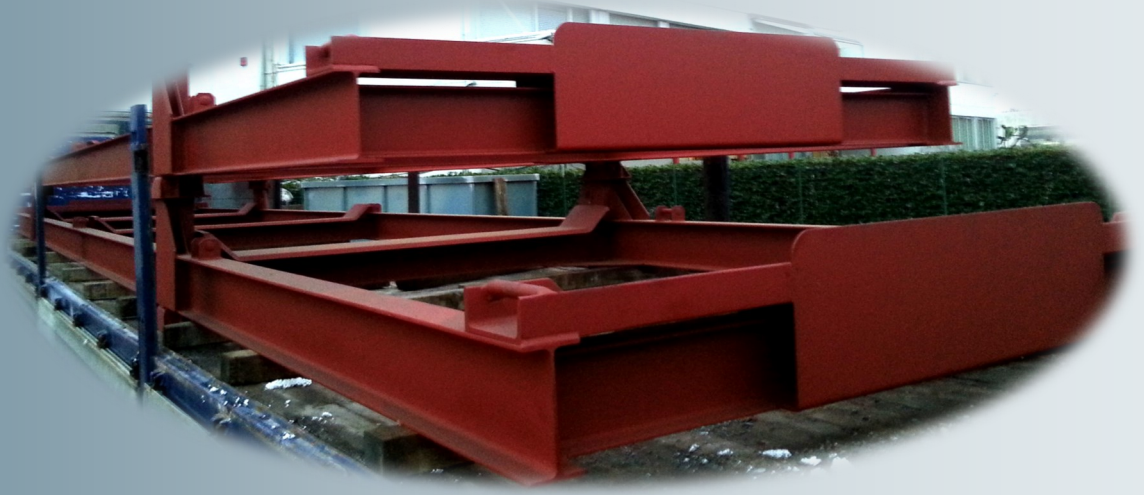


IOCS S.r.L.

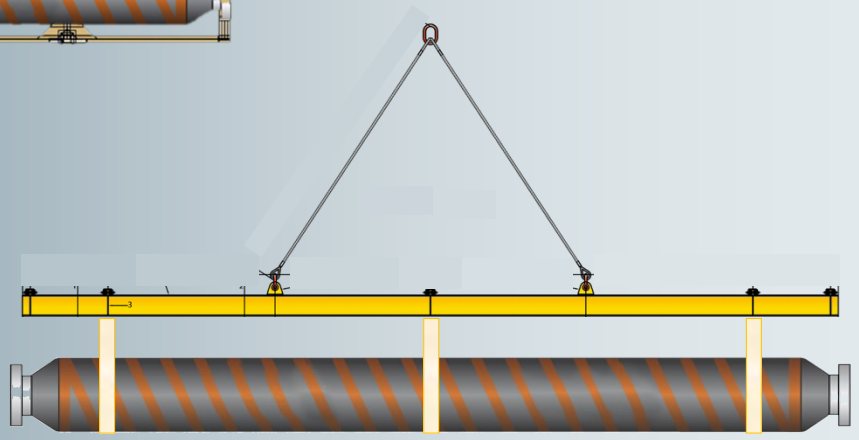
Hoses & Ancillaries Equipment Supply for Oil & Gas Industry

HOSES HANDLING & STORAGE

HOSES HANDLING & STORAGE



- **Steel Pallets**
- **Lifting Beams**
- **Spreader Bars**

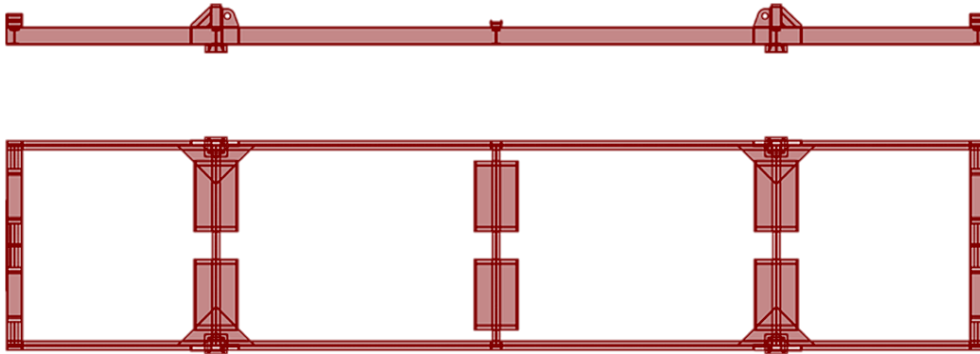




Steel Pallet

For Handlings, Transportation, Storage and Installation

Prod. Code: 360



STRUCTURE TYPE	BACKING TYPE	LENGTH METERS	WIDTH METERS	SWL TONS
LIGHT	SADDLES	9.24	2.4	6
LIGHT	SUPPORTS	9.24	2.4	6
STANDARD	SADDLES	9.24	2.4	12
STANDARD	SUPPORTS	9.24	2.4	12
LIGHT	SADDLES	10.84	2.4	6
LIGHT	SUPPORTS	10.84	2.4	6
STANDARD	SADDLES	10.84	2.4	12
STANDARD	SUPPORTS	10.84	2.4	12
LIGHT	SADDLES	12.34	2.4	6
LIGHT	SUPPORTS	12.34	2.4	6
STANDARD	SADDLES	12.34	2.4	12
STANDARD	SUPPORTS	12.34	2.4	12
FOR WOODEN BOX	SUPPORTS	7	2.4	6

The pallets are manufactured and tested in accordance with the GMPHOM 2009.

Each pallet is designed with a Safe Working Load of 12 tonnes. Each pallet design shall be approved by a third party based on calculations and a proof test at 2.5 x SWL. Following the proof test, all welds on lifting lugs shall be 100% Magnetic Particle Inspected to ASME V111, Appendix 6.

The length of the pallets, its structure, the height of the support poles and the number of hoses that can be stored are depending on dimensions and weights of the hoses themselves.



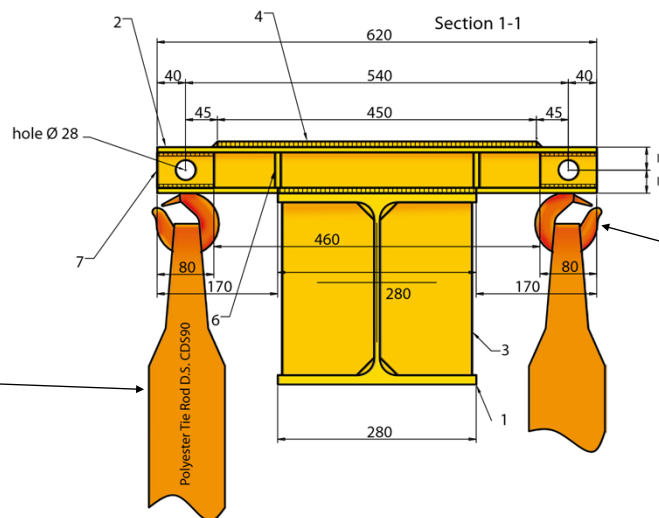
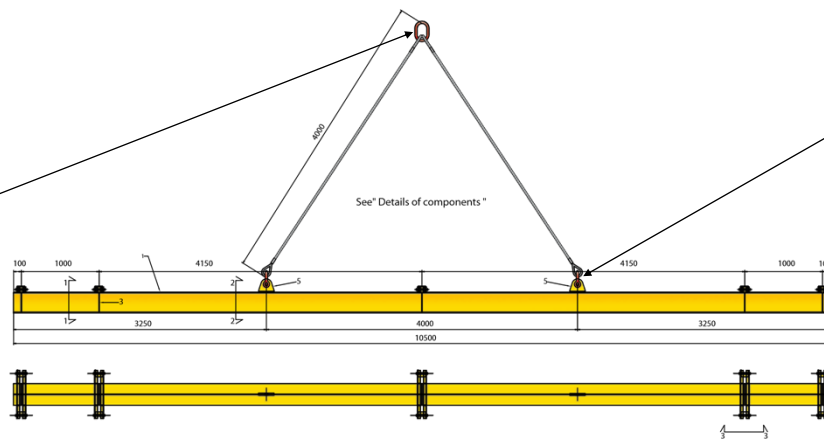


Lifting Beam

For Handling

Prod. Code: 380

It is recommended that, when lifting single large bore hose, a lifting frame and lifting straps/slings shall be in use. The lifting frame should have at least three lifting points by using a strap over the nipple area at each hose end and an additional strappings equally spaced between the end straps.



LIFTING BEAM	LENGTH METERS	SWL TONS
STANDARD	10	3
STANDARD	10	4
STANDARD	10	5



Spreader Bar

To prevent collisions between two lines of hoses

Created with the purpose of preventing collisions between two lines of hoses during handling at sea.

The Polyurethane cover ensures a longer life of the steel pipe and chain inside it.

The steel pipe ensures proper rigidity to the structure and the chain prevents rupture in traction.

