

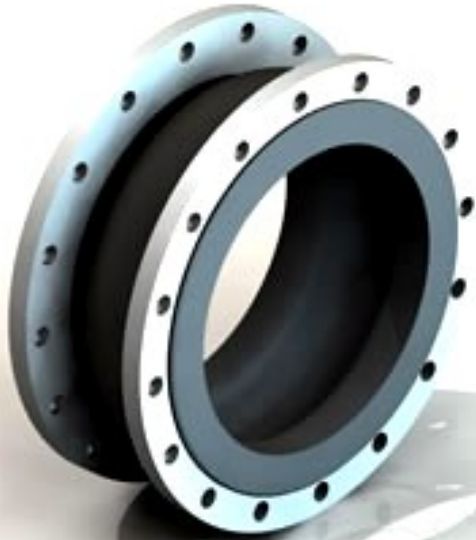


IOCS S.r.L.

Hoses & Ancillaries Equipment Supply for Oil & Gas Industry

EXPANSION JOINTS

EXPANSION JOINTS



Rubber Expansion Joints

- **Type W and WT**
- **Type F and FT**
- **Accessories and Special Design**



Rubber Expansion Joints



IOCS S.r.L.

Flange EN 1092-1 PN6, PN10, PN16 and ASME B 16.5 Class 150lb & 300lb

IOCS srl offers the most complete range of expansion joints to meet all type of applications.

Thermal growth, equipment movement, vibration or pressure pulsation may generate movement in a piping system. When this movements is not absorbed by the piping system itself, an Expansion Joints is the perfect solution.

| LABEL COLOUR | INNER TUBE | OUTER TUBE | MAX TEMP. °C | APPLICATIONS |
|------------------|-----------------------|-----------------------|--------------|---|
| RED | EPDM | EPDM | 90 °C | Hot water, cooling water with salt solution, chlorire solution, estern and keto- |
| DUBLE RED HT | EPDM HT | EPDM HT | 130 °C | Hot water, vapour, hot air, etc. at temperature up to 130 °C |
| YELLOW | NITRILE® | NITRILE® | 90 °C | Water, salt solutions, alkalis, mineral oils, vegetable or animal oils, oils aerosols, butane or propane gas, etc. |
| DOUBLE YELLOW HO | SPECIAL NITRILE® | SPECIAL NITRILE® | 130 °C | Water, salt solutions, alkalis, mineral oils, vegetable or animal oils, oils aerosols, butane or propane gas, etc. up to 130 °C |
| WHITE | NITRILE® WHITE | NITRILE® | 90 °C | Drinking water, food and beverages, including fats and oils. |
| GREEN | HYPALON® | NEOPRENE® CHLOROPRENE | 90 °C | Strong and/or concentrated acids, etc. Compressed air that bears oil aerosols. |
| BLUE | SBR | NEOPRENE® CHLOROPRENE | 90 °C | Wearing material such as sludge suspended stone, calcium. |
| PURPLE | VITON® | EPDM | 90 °C | Highly aggressive chemicals (strong acids, aromatic solvents) |
| BLACK | NEOPRENE® CHLOROPRENE | NEOPRENE® CHLOROPRENE | 90 °C | Water, warm water, sea water, air and weak acids. |

Fabric reinforcements Nylon®, Polyester, Aramid or Kevlar®

Metal reinforcements Wire or solid steel strings are imbedded in the carcass and are used as strengthening members of the Expansion Joint.



IOCS S.r.L.

Rubber Expansion Joints

Flange EN 1092-1 PN6, PN10, PN16 and ASME B 16.5 Class 150lb & 300lb

ADVANTAGES OF THE EXPANSION JOINTS

- Minimal face-to-face dimensions while absorbing large movements.
- Low Spring Rates due to inherent flexibility of rubber.
- Corrosion and Erosion resistance.
- No gaskets required for installation.
- Reduce fatigue factor.



| DN | Length mm | Compression mm | Extension mm | Lateral mm | Angular deg. | Working Pressure |
|------|-----------|----------------|--------------|------------|--------------|------------------|
| 32 | 130 & 150 | 30 | 20 | 20 | 30 | 16 |
| 40 | 130 & 150 | 30 | 20 | 20 | 30 | 16 |
| 50 | 130 & 150 | 30 | 20 | 20 | 30 | 16 |
| 65 | 130 & 150 | 30 | 20 | 20 | 30 | 16 |
| 80 | 130 & 150 | 30 | 20 | 20 | 30 | 16 |
| 100 | 130 & 150 | 30 | 20 | 20 | 25 | 16 |
| 125 | 130 & 150 | 30 | 20 | 20 | 25 | 16 |
| 150 | 130 & 150 | 30 | 20 | 20 | 15 | 16 |
| 200 | 200 & 130 | 30 | 20 | 20 | 15 | 16 |
| 250 | 200 & 130 | 30 | 20 | 20 | 10 | 16 |
| 300 | 200 & 130 | 30 | 20 | 20 | 10 | 16 |
| 350 | 200 | 30 | 20 | 20 | 10 | 10 |
| 400 | 200 | 30 | 20 | 20 | 10 | 10 |
| 450 | 200 | 30 | 20 | 20 | 10 | 10 |
| 500 | 200 | 30 | 20 | 20 | 10 | 10 |
| 600 | 200 | 30 | 20 | 20 | 6 | 10 |
| 700 | 275 | 40 | 25 | 30 | 5 | 10 |
| 800 | 275 | 40 | 25 | 30 | 4 | 10 |
| 900 | 300 | 40 | 25 | 30 | 3 | 10 |
| 1000 | 300 | 40 | 25 | 30 | 3 | 10 |

CONSTRUCTION DETAILS

Rubber Expansion Joint is a flexible connector fabricated of natural or synthetic elastomers, fluoroplastic and fabrics and, if necessary, metallic reinforcements used to absorb movements in a piping system while containing pressure and a medium running through it.

Our rubber Expansion Joints are designed according to:

- Pressure Equipment Directive PED 97/23/EC.
- FSA (Fluid Sealing Association) Non-Metallic Expansion Joints Division.
- ASTM F1123—B7(2010) Standard Specification for Non-Metallic Expansion Joints.

IOCS srl Expansion Joints are manufactured considering:

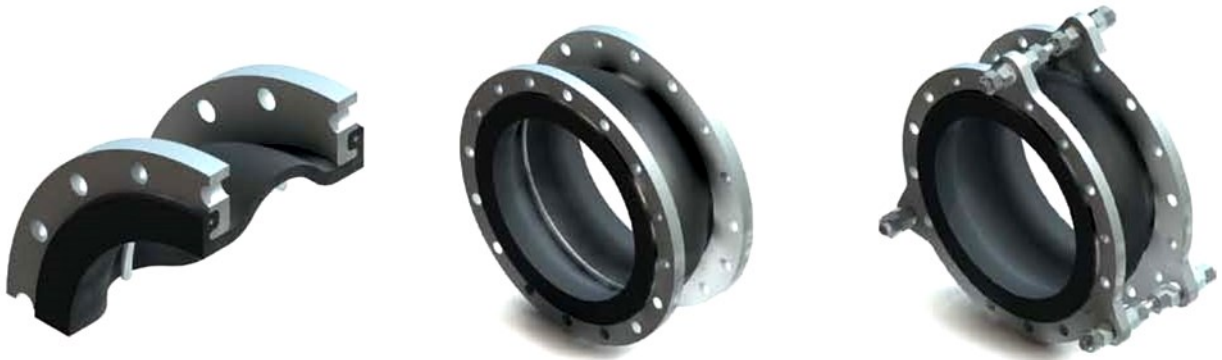
- Chemical and Temperature resistance of internal layers.
- Pressure-resistant reinforcing fabrics.
- Weather, Ozone and UV resistance of external layers.

Rubber Expansion Joints W / WT TYPE



IOCS S.r.L.

Flange EN 1092-1 PN6, PN10, PN16 and ASME B 16.5 Class 150lb & 300lb Product Code: 500



W Section

W Type

WT Type

W Series

These are the standard expansion joints, consisting of a molded body with high quality rubber incorporating galvanized carbon steel flanges.

BODY MATERIAL TYPE:

EPDM, EPDM HT, Nitrile®, Spec. Nitrile®, Nitrile® white, Hypalon®, SBR, Viton®, Cloroprene, etc.

FLANGES:

Zinc Plated carbon steel as standard. Also available in hot dip galvanized carbon steel, stainless steel etc. DN 32—DN 1000 with flanges drilled to EN 1092-1 PN 6, PN 10, PN 16 and ASME. On request flanges are also available drilled to JIS and AWWA standards.

WT Series

AS W Series but incorporating control units/tie rod system. A control unit assembly is a system of 2 or more control rods placed across the Expansion Joint from flange to flange to set the maximum allowable expansion/contraction of the Expansion Joint and will absorb the pressure thrust. Recommended on most applications to prevent damage due to excessive pipe movements, each rod incorporates double nuts on each end to keep the Expansion Joint from over-elongating and spherical washers to allow Lateral, Angular and some Torsional movements as well as to accommodate moderate piping misalignments.



IOCS S.r.L.

Rubber Expansion Joints F / FT TYPE

Product Code: 501 Flange EN 1092-1 PN6, PN10, PN16 and ASME B 16.5 Class 150lb & 300lb



F Section



F Type



FT Type

F Series

Expansion Joints with Full Face Rubber Flange. The Full Face flanges are integral with the body of the joint and drilled to conform the bolt pattern of the companion flanges of pipe line. These are high quality “custom-made” Expansion Joints supplied with split or fixed flanges in carbon steel as standard.

SIZE:

Any size up to 4000 mm diameter.

PRESSURE RATING:

Up to 40 bar. Higher pressure ratings available depending on size.

BODY MATERIAL TYPE:

EPDM, EPDM HT, Nitrile®, Spec. Nitrile®, Nitrile® white, Hypalon®, SBR, Viton®, Chloroprene, etc.

FLANGES:

Zinc Plated carbon steel as standard. Also available in hot dip galvanized carbon steel, stainless steel etc. DN 32—DN 1000 with flanges drilled to EN 1092-1 PN 6, PN 10, PN 16 and ASME. On request flanges are also available drilled to JIS and AWWA standards.

FT Series

AS F Series but incorporating control units/tie rod system. A control unit assembly is a system of 2 or more control rods placed across the Expansion Joint from flange to flange to set the maximum allowable expansion/contraction of the Expansion Joint and will absorb the pressure thrust. Recommended on most applications to prevent damage due to excessive pipe movements, each rod incorporates double nuts on each end to keep the Expansion Joint from over-elongating and spherical washers to allow Lateral, Angular and some Torsional movements as well as to accommodate moderate piping misalignments.

Rubber Expansion Joints Accessories



IOCS S.r.L.

Flange EN 1092-1 PN6, PN10, PN16 and ASME B 16.5 Class 150lb & 300lb Product Code: 502

ACCESSORIES

CONTROL UNIT

(Tie rods, spherical washers, etc.) F and W Series Expansion Joints can be supplied with Control Rods.

METAL REINFORCEMENTS AND VACUUM RINGS

The Expansion Joints can also incorporate internal vacuum rings and/or external pressure support rings can be supplied in hot dip galvanized carbon steel, in stainless steel or PTFE lined.



SPECIAL DESIGNS

MULTIPLE ARC DESIGN

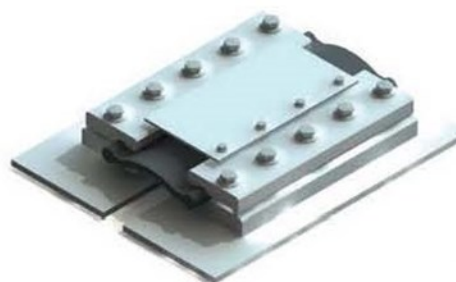
Rubber Expansion Joints with two or more arches. Generally used to absorb large movements.

“DOG BONE” TYPE EXPANSION JOINTS

The Belt Type (Dog Bone) Condenser Expansion Joint is specifically designed for turbine/condenser connections. It is the most widely used turbine to condenser expansion joint use. A moulded construction of plies of rubber impregnated polyester fabric, EPDM or Neoprene rubber cover and reinforcing cord at each end. IOCS srl designs and supplies the rubber Dog Bone part and the special clamping system required for installation.



F2 Type



Dog Bone Type